

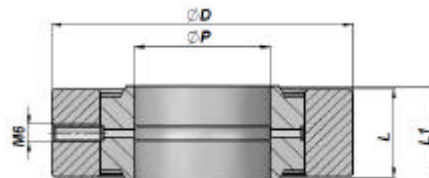


Codice Code Bestell-Nr.	Per For Für	ØD	L	ØP	kg
CAGE040026	GE ø15	40	11	26	0.06
CAGE050035	GE ø20	50	14	35	0.11
CAGE069042	GE ø25	69	19	42	0.35
CAGE075047	GE ø30	75	20	47	0.41
CAGE080055	GE ø35	80	22	55	0.45
CAGE094062	GE ø40	94	26	62	0.79
CAGE100068	GE ø45	100	30	68	0.98
CAGE120075	<b>NEW</b> GE ø50	120	33	75	1.78
CAGE138090	<b>NEW</b> GE ø60	138	40	90	2.69

Confezione Box Verpackung	Pz Pcs Stk
Z0BCAGE040026	200
Z0BCAGE050035	200
Z50CAGE069042	50
Z50CAGE075047	50
Z25CAGE080055	25
Z20CAGE094062	20
Z10CAGE100068	10
Z10CAGE120075	10
Z05CAGE138090	5

MATERIALE - MATERIAL:

ACCIAIO - STEEL - STAHL S355J0 ( Fe510C ) - S355JR ( A105 )

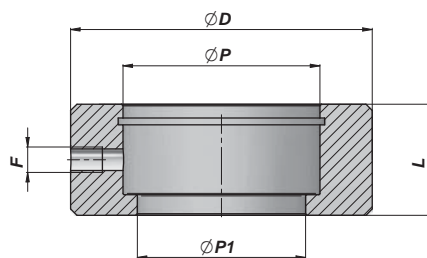


Codice Code Bestell-Nr.	ØP	ØD	L	L1	kg
CAGEG04002615	15	40	11	12	0.08
CAGEG05003520	20	50	14	16	0.17
CAGEG06904225	25	69	19	20	0.46
CAGEG07504730	30	75	20	22	0.55
CAGEG08005535	35	80	22	25	0.67
CAGEG09406240	40	94	26	28	1.09
CAGEG10006845	45	100	30	32	1.38
CAGEG12007550	<b>NEW</b> 50	120	33	35	2.32
CAGEG13809060	<b>NEW</b> 60	138	40	44	3.69

Confezione Box Verpackung	Pz Pcs Stk
Z0BCAGEG04002615	200
Z00CAGEG05003520	100
Z25CAGEG06904225	25
Z25CAGEG07504730	25
Z25CAGEG08005535	25
Z20CAGEG09406240	20
Z10CAGEG10006845	10
Z10CAGEG12007550	10
Z05CAGEG13809060	5

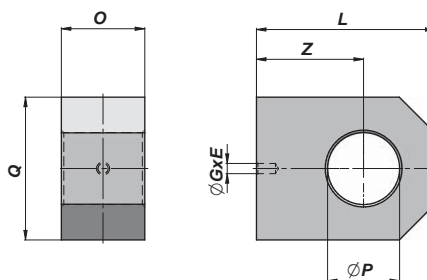
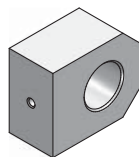
MATERIALE - MATERIAL:

ACCIAIO - STEEL - STAHL S355J0 ( Fe510C ) - S355JR ( A105 )



Codice Code Bestell-Nr.	Per For Für	ØD	L	ØP	ØP1	F	kg	Confezione Box Verpackung	Pz Pcs Stk
CAGEN04015015	GE ø15	40	15	26	22	M6	0,09	Z00CAGEN04015	100
CAGEN05019020	GE ø20	50	19	35	29	M6	0,15	Z00CAGEN05019	100
CAGEN06023025	GE ø25	60	23	42	35	M6	0,26	Z50CAGEN06023	50
CAGEN07028030	GE ø30	70	28	47	40	M6	0,47	Z50CAGEN07028	50
CAGEN08530035	GE ø35	85	30	55	47	M6	0,79	Z20CAGEN08530	20
CAGEN09535040	GE ø40	95	35	62	53	M8	1,14	Z10CAGEN09535	10
CAGEN11040045	GE ø45	110	40	68	60	M8	1,87	Z10CAGEN11040	10
CAGEN12040050	GE ø50	120	40	75	66	M8	2,18	Z05CAGEN12040	5
CAGEN13850060	GE ø60	138	50	90	80	M8	3,40	Z02CAGEN13850	2

MATERIALE - MATERIAL:  
ACCIAIO - STEEL - STAHL S355J0 (Fe510C) - S355JR (A105)



Codice Code Bestell-Nr.	ØP	Q	O	Z	L	ØGxE	kg
COF1600000	16,20	35	20	25	42	Ø 4,25 x 8	0,18
COF2000000	20,25	45	25	30	50	Ø 4,25 x 8	0,35
COF2500000	25,25	50	30	35	60	Ø 4,25 x 8	0,56
COF3000000	30,25	60	35	45	75	Ø 4,25 x 8	0,97
COF3500000	35,25	70	40	55	90	Ø 4,25 x 8	1,60
NEW! COF4000000	40,25	70	40	60	95	Ø 4,25 x10	1,50

MATERIALE - MATERIAL:  
ACCIAIO - STEEL - STAHL S355J0 (Fe510C)