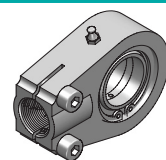
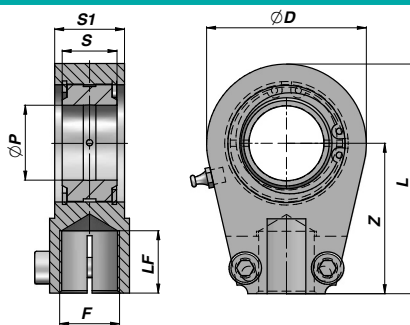


TERMINALE A SNODO RILUBRIFICABILE
BALL-JOINT END WITH GREASE NIPPLE
NACHSCHMIERBARER GELENKKOPF

CSTAPR..U



Codice Code Bestell-Nr.	ØP	Z	S	ØD	S1	L	F	LF	FC (kN)	kg
CSTAPR020U	20	50	16	56	19	80	M16x1,5	17	30	0,44
CSTAPR025U	25	50	20	56	23	80	M16x1,5	17	48	0,47
CSTAPR030U	30	60	22	64	28	94	M22x1,5	23	62	0,77
CSTAPR035U	35	70	25	78	30	112	M28x1,5	29	80	1,24
CSTAPR040U	40	85	28	94	35	135	M35x1,5	36	100	2,12
CSTAPR050U	50	105	35	116	40	168	M45x1,5	46	156	3,74
CSTAPR060U	60	130	44	130	50	200	M58x1,5	59	245	6,49
CSTAPR070U	70	150	49	154	55	232	M65x1,5	66	315	9,88
CSTAPR080U	80	170	55	176	60	265	M80x2	81	400	14,20
CSTAPR090U (**)	90	210	60	206	65	322	M100x2	101	490	20,00
CSTAPR100U (**)	100	235	70	231	70	360	M110x2	111	610	27,50
CSTAPR110U (**)	110	265	70	266	80	407,5	M120x3	125	655	45,60
CSTAPR120U (**)	120	310	85	340	90	490	M130x3	135	950	72,00

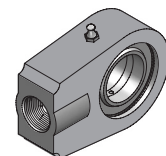
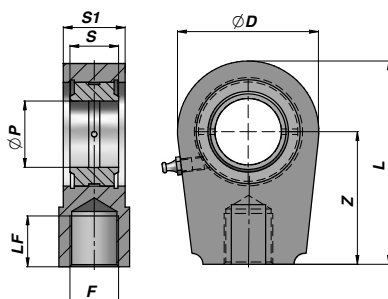
FC = CARICO DINAMICO AMMESSO - MAX DYNAMIC LOAD - MAX DYNAMISCHE LAST

MATERIALE - MATERIAL:

ACCIAIO - STEEL - STAHL ISO 12240-4 SERIE E (**) = GHISA SFEROIDALE - NODULAR CAST IRON - SPHÄROGUSS

TERMINALE A SNODO RILUBRIFICABILE
BALL-JOINT END WITH GREASE NIPPLE
NACHSCHMIERBARER GELENKKOPF

CSTAPR..N



Codice Code Bestell-Nr.	ØP	Z	S	ØD	S1	L	F	LF	FC (kN)	kg
CSTAPR020N	20	50	16	56	19	80	M16x1,5	17	30	0,45
CSTAPR025N	25	50	20	56	23	80	M16x1,5	17	48	0,49
CSTAPR030N	30	60	22	64	28	94	M22x1,5	23	62	0,76
CSTAPR035N	35	70	25	78	30	112	M28x1,5	29	80	1,26
CSTAPR040N	40	85	28	94	35	135	M35x1,5	36	100	2,15
CSTAPR050N	50	105	35	116	40	168	M45x1,5	46	156	3,80
CSTAPR060N	60	130	44	130	50	200	M58x1,5	59	245	6,20
CSTAPR070N	70	150	49	154	55	232	M65x1,5	66	315	9,83
CSTAPR080N	80	170	55	176	60	265	M80x2	81	400	13,97
CSTAPR090N (**)	90	210	60	206	65	322	M100x2	101	490	23,50
CSTAPR100N (**)	100	235	70	231	70	360	M110x2	111	610	32,00
CSTAPR110N (**)	110	265	70	266	80	407	M120x3	125	655	41,00
CSTAPR120N (**)	120	310	85	340	90	490	M130x3	135	950	72,00

FC = CARICO DINAMICO AMMESSO - MAX DYNAMIC LOAD - MAX DYNAMISCHE LAST

MATERIALE - MATERIAL:

ACCIAIO - STEEL - STAHL ISO 12240-4 SERIE E (**) = GHISA SFEROIDALE - NODULAR CAST IRON - SPHÄROGUSS