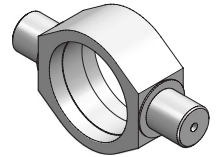
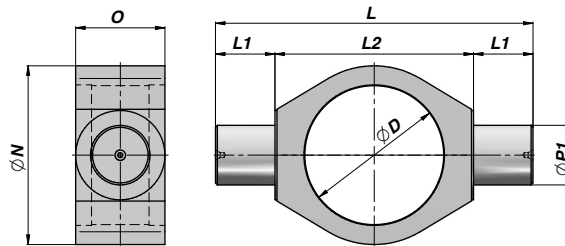


Codice Code Bestell-Nr.	ØD (+0,2 +0,3)	ØN	O	ØG	ØINT	SM	kg
CFL0050109	50	109	12,5	ø 11 x 4	87	4x45°	0,66
CFL0060128	60	128	14,5	ø 13 x 4	105	4x45°	1,09
CFL0070142	70	142	16,5	ø 13 x 4	117	5x45°	1,50
CFL0080162	80	162	16,5	ø 15 x 4	127	5x45°	1,94
CFL0095181	95	181	18,5	ø 17 x 6	149	7x45°	2,53
CFL0115194	115	194	24,5	ø 17 x 6	162	8x45°	3,47

MATERIALE - MATERIAL:
ACCIAIO - STEEL - STAHL S355J0 (Fe510C)

PERNO BASCULANTE
WELD-ON TRUNNION
SCHWENKZAPFEN

CPB



Codice Code Bestell-Nr.	ØD	ØP1 (+0,0 -0,1)	L1	L	ØN	O	L2	kg
CPB0100000	50	20	20	110	65	30	70	0,52
CPB0200000	60	25	25	130	75	35	80	0,79
CPB0300000	70	30	30	160	90	45	100	1,57
CPB0400000	80	35	35	180	100	50	110	2,03
CPB0500000	92	40	40	195	115	55	115	2,60
CPB0501000	95	40	40	195	115	55	115	2,40
CPB0550000	105	45	45	215	125	60	125	3,00
CPB0600000	115	50	50	245	145	70	145	5,30
CPB0800000	140	60	60	290	170	80	170	7,70

TOLLERANZA - TOLERANCE - TOLERANZ: ØD 50-60-70-80-92-95 = +0,2 +0,3 - ØD 105-115-140 = +0,3 +0,4

MATERIALE - MATERIAL:
ACCIAIO - STEEL - STAHL S355J0 (Fe510C)