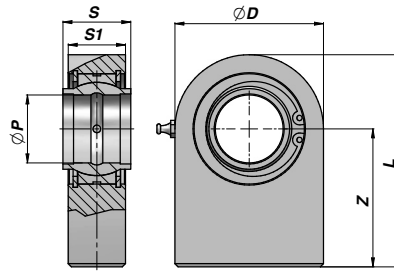
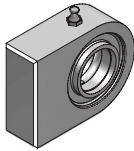


# CSTSCE...N

TERMINALE A SNODO RILUBRIFICABILE  
BALL-JOINT END WITH GREASE NIPPLE  
NACHSCHMIERBARER GELENKKOPF



| Codice Code Bestell-Nr. | ØP  | Z   | S   | ØD  | S1 | L     | FC (kN) | kg    |
|-------------------------|-----|-----|-----|-----|----|-------|---------|-------|
| CSTSCE720N              | 20  | 38  | 20  | 50  | 19 | 63    | 30      | 0,36  |
| CSTSCE725N              | 25  | 45  | 25  | 55  | 23 | 72,5  | 48      | 0,54  |
| CSTSCE732N              | 32  | 65  | 32  | 70  | 27 | 103   | 62,5    | 1,12  |
| CSTSCE740N              | 40  | 69  | 40  | 100 | 35 | 119   | 100     | 2,50  |
| CSTSCE750N              | 50  | 88  | 50  | 123 | 40 | 149,5 | 156     | 4,60  |
| CSTSCE763N              | 63  | 107 | 63  | 145 | 50 | 178   | 248     | 9,30  |
| CSTSCE770N              | 70  | 115 | 70  | 164 | 55 | 197   | 315     | 11,25 |
| CSTSCE780N              | 80  | 141 | 80  | 180 | 60 | 231   | 400     | 15,75 |
| CSTSCE790N (1)          | 90  | 150 | 90  | 226 | 65 | 263   | 490     | 24,00 |
| CSTSCE795N (1)          | 100 | 170 | 100 | 250 | 70 | 295   | 610     | 33,95 |
| CSTSCE796N (1)          | 110 | 185 | 110 | 295 | 80 | 332,5 | 655     | 49,00 |
| CSTSCE797N (1)          | 125 | 210 | 125 | 360 | 90 | 390   | 950     | 81,00 |

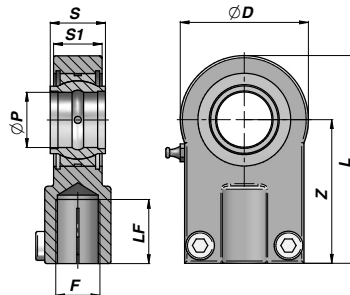
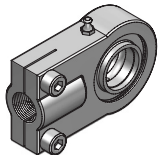
FC = CARICO DINAMICO AMMESSO - MAX DYNAMIC LOAD - MAX DYNAMISCHE LAST

(1) = PANTOGRAFATI - PROFILE PLATE - PANTOGRAPHIERT

MATERIALE - MATERIAL: ACCIAIO - STEEL - STAHL ISO 12240-1 SERIE W

# CSTAPR...CE

TERMINALE A SNODO RILUBRIFICABILE  
BALL-JOINT END WITH GREASE NIPPLE  
NACHSCHMIERBARER GELENKKOPF



| Codice Code Bestell-Nr. | ØP  | Z   | S   | ØD  | S1  | L     | F        | LF  | FC (kN) | kg    |
|-------------------------|-----|-----|-----|-----|-----|-------|----------|-----|---------|-------|
| *CSTAPR612C             | 12  | 38  | 12  | 32  | 11  | 54    | M12x1,25 | 17  | 10,8    | 0,11  |
| CSTAPR616C              | 16  | 44  | 16  | 40  | 13  | 64    | M14x1,5  | 19  | 17,6    | 0,20  |
| CSTAPR620C              | 20  | 52  | 20  | 47  | 17  | 77    | M16x1,5  | 23  | 30      | 0,35  |
| CSTAPR625C              | 25  | 65  | 25  | 58  | 22  | 96    | M20x1,5  | 29  | 48      | 0,62  |
| CSTAPR632C              | 32  | 80  | 32  | 71  | 28  | 118   | M27x2    | 37  | 67      | 1,15  |
| CSTAPR640C              | 40  | 97  | 40  | 90  | 33  | 146   | M33x2    | 46  | 100     | 2,18  |
| CSTAPR650C              | 50  | 120 | 50  | 109 | 41  | 179   | M42x2    | 57  | 156     | 3,96  |
| CSTAPR663C              | 63  | 140 | 63  | 136 | 53  | 213   | M48x2    | 64  | 255     | 6,80  |
| CSTAPR670C (**)(A)      | 70  | 160 | 70  | 155 | 57  | 245   | M56x2    | 76  | 315     | 9,60  |
| CSTAPR680C (**)         | 80  | 180 | 80  | 170 | 67  | 270   | M64x3    | 86  | 400     | 13,00 |
| CSTAPR690C (**)(A)      | 90  | 195 | 90  | 185 | 72  | 296   | M72x3    | 91  | 490     | 19,10 |
| CSTAPR695C (**)         | 100 | 210 | 100 | 211 | 85  | 322   | M80x3    | 96  | 610     | 25,00 |
| CSTAPR696C (**)(A)      | 110 | 235 | 110 | 235 | 88  | 364   | M90x3    | 106 | 655     | 32,00 |
| CSTAPR697C (**)         | 125 | 260 | 125 | 265 | 103 | 406,5 | M100x3   | 113 | 950     | 46,00 |

FC = CARICO DINAMICO AMMESSO - MAX DYNAMIC LOAD - MAX DYNAMISCHE LAST

\* NON RILUBRIFICABILE - WITHOUT GREASE NIPPLE - NICHT NACHSCHMIERBAR

(A) = FUORI NORMATIVA - WITHOUT STANDARD - AUßER NORM

MATERIALE - MATERIAL:

ACCIAIO - STEEL - STAHL ISO 12240-4 SERIE E (\*\*) = GHISA SFEROIDALE - NODULAR CAST IRON - SPHÄROGUSS