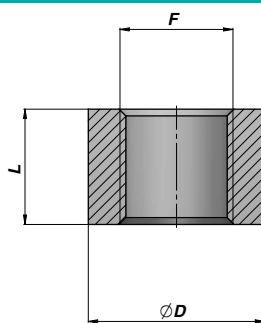
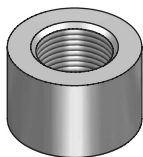
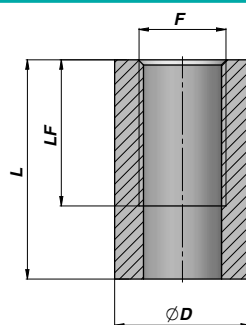
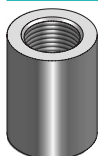


CBS**BORCHIA FILETTATA**
THREADED PORT
ANSCHLUSSGEWINDE

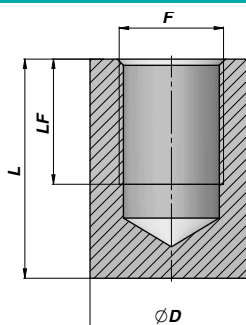
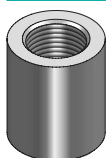
Codice Code Bestell-Nr.	F BSP	L	ØD	kg x100	Codice Code Bestell-Nr.	F	L	ØD	kg x100
CBS0300000	1/8"	14	20	2,80	CBS0001215	M12x1,5	16	22	3,70
CBS0400000	1/4"	16	22	3,50	CBS0001415014	M14x1,5	14	22	2,80
CBS0600000	3/8"	17	26	4,70	CBS0001415	M14x1,5	16	22	3,20
CBS0800000	1/2"	18	30	6,10	CBS0001615	M16x1,5	17	26	4,90
CBS1200000	3/4"	20	38	10,50	CBS0001815014	M18x1,5	14	28	4,40
CBS1600000	1"	25	45	16,90	CBS0001815	M18x1,5	18	28	5,70
CBS2000000	1"1/4	24,5	55	22,60	CBS0002015	M20x1,5	18	30	6,10
CBS2400000	1"1/2	30	60	28,90	CBS0002215	M22x1,5	18	30	5,30
CBS3200000	2"	30	70	30,70					

MATERIALE - MATERIAL: ACCIAIO - STEEL - STAHL 9SMn28

CBSP**BORCHIA FILETTATA ALTA**
HIGH THREADED PORT
HOHES ANSCHLUSSGEWINDE

Codice Code Bestell-Nr.	F BSP	LF	L	ØD	kg x100
CBSP040000	1/4"	27	40	22	8,60
CBSP060000	3/8"	28	42	26	11,70
CBSP080000	1/2"	33	48	30	16,30

MATERIALE - MATERIAL: ACCIAIO - STEEL - STAHL 9SMn28

CBSL**BORCHIA FILETTATA CIECA**
BLIND THREADED PORT
ANSCHLUSSGEWINDE MIT SACKLOCH

Codice Code Bestell-Nr.	F BSP	LF	L	ØD	kg x100
CBSL040000	1/4"	13	30	22	7,30
CBSL060000	3/8"	20	35	26	10,70
CBSL080000	1/2"	22	35	30	13,80

MATERIALE - MATERIAL: ACCIAIO - STEEL - STAHL 9SMn28