

# FT2260/6



## IN LINE SINGLE-ACTING VALVES (BALL)

They are inserted in branches of the circuit where the free flow in one direction is allowed and the return flow in the opposite direction is not possible. The single-acting valves (in line) are of ball type with alignment guide made of composite high resistance material which allows a total passage and a great breaking strength and wear resistance. All this has been confirmed by numerous tests. The soft seal implemented through a special material sealing eliminates every leakage with the use of gas or liquid in general.

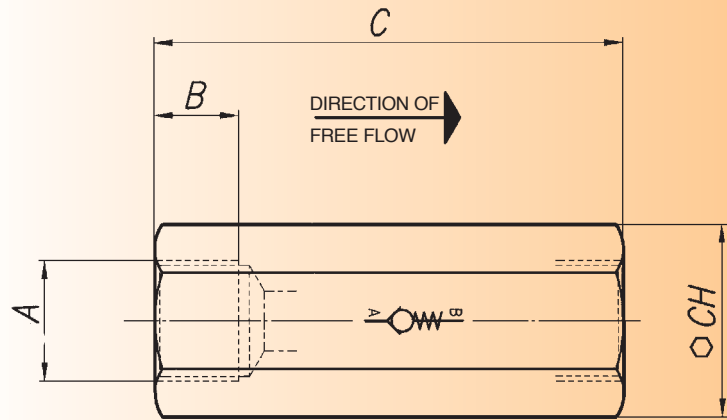
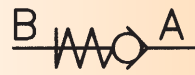


## materials

<b>Body</b>	AISI 316 stainless steel
<b>Spring</b>	AISI 316 stainless steel
<b>Ball</b>	UNI 100 C 6
<b>Ball guide</b>	Nylon 66 + fibra carbonio
<b>Soft seal</b>	HPU

## example for ordering

<b>Code</b>	<b>Type</b>
FT 2260/6	14

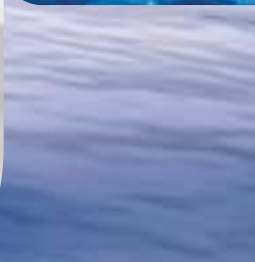


## dimensions

Type	A UNI 338	B	C	CH	Weight kg
18	1/8"G	8,5	41	16	0,054
14	1/4"G	12,5	54	19	0,089
38	3/8"G	13	65	24	0,175
12	1/2"G	16	77	30	0,310
34	3/4"G	20	88	36	0,450
100	1"G	23	108,5	46	0,965

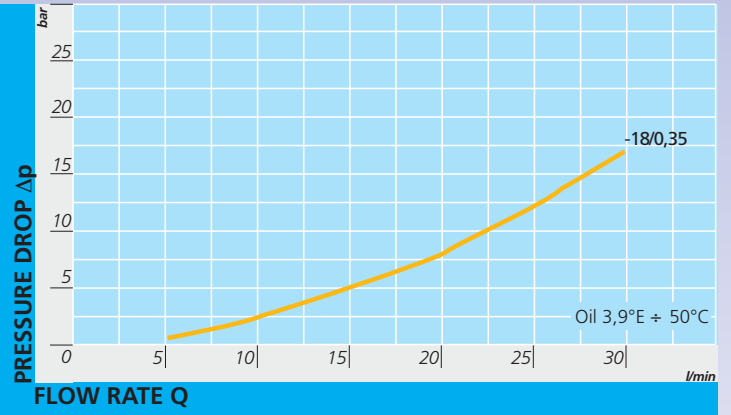
## technical data

Type	Working pressure bar	Working temp. °C	Filtration grade µm absolute
18	350	-20° / +120°C	25
14	350	-20° / +120°C	25
38	350	-20° / +120°C	25
12	350	-20° / +120°C	25
34	350	-20° / +120°C	25
100	320	-20° / +120°C	25

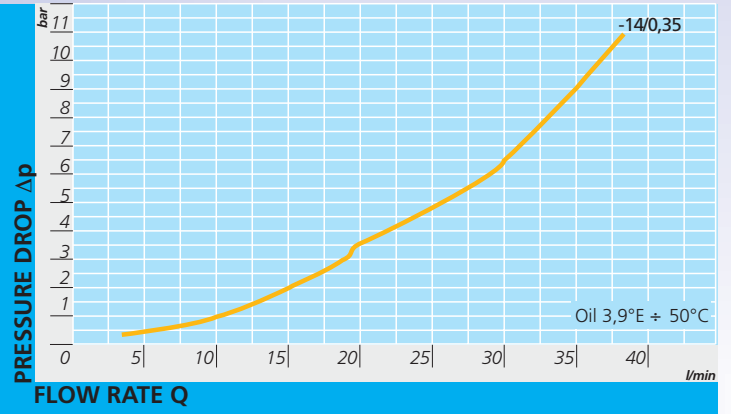




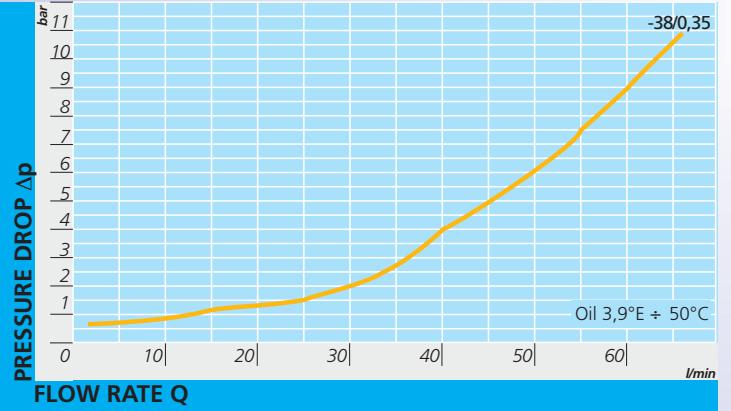
FT 2260/6 - 18



FT 2260/6 - 14

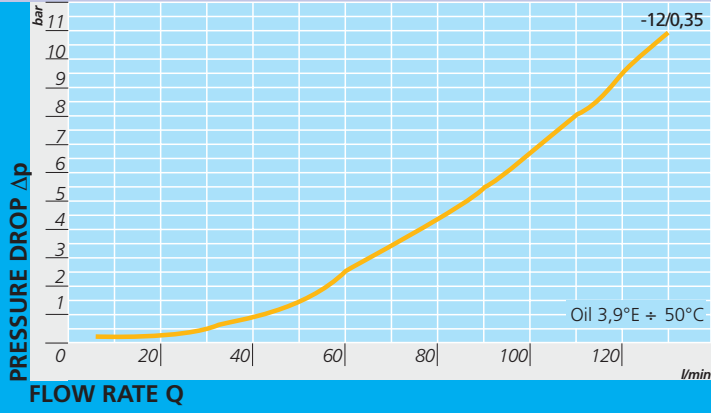


FT 2260/6 - 38

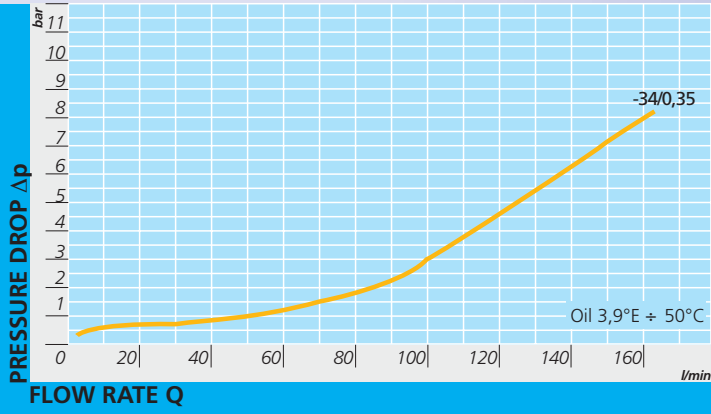


# curves

FT 2260/6 - 12



FT 2260/6 - 34



FT 2260/6 - 100

