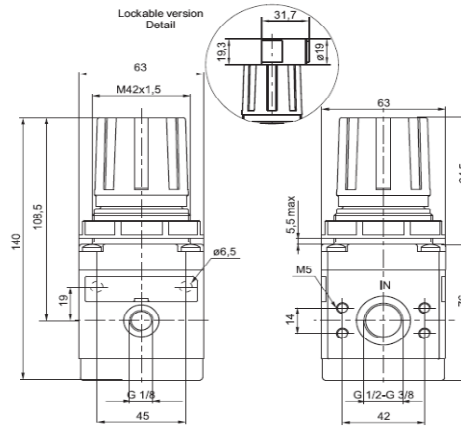




Pressure regulator

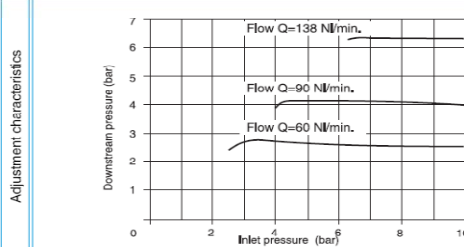
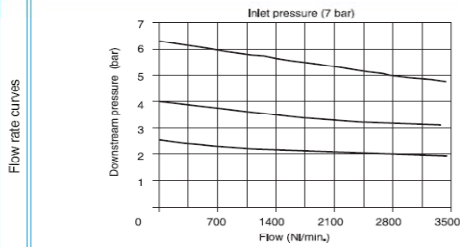


Ordering code

17302 **C** **C** **1** **0**

CONNECTIONS	
C	A = G 3/8"
	B = G 1/2"
ADJUSTING RANGE	
	A = 0 - 2 bar
C	B = 0 - 4 bar
	C = 0 - 8 bar
	D = 0 - 12 bar
TYPE	
1	L = Without Relieving
	SM = improved relieving
OPTION	
0	= Standard (without options)
	K = Lockable version

Example: 17302A.C
Pressure regulator with G 3/8" connections, adjusting range 0 - 8 bar with relieving.



Operating Characteristics

- Diaphragm pressure regulator with relieving.
- Balanced poppet.
- Lockable handle by simply pressing it downwards in the desired position.
- Body made with light alloy.
- Wall mounting possibility with M6 screws protected by covers.
- Two pressure gauge connections with plug complete of seal.
- Panel mounting bracket.

Technical characteristics

Connections	G 3/8" - G 1/2"
Max working pressure (bar)	13 bar - 1,3 MPa
Temperature °C	-5 °C - 50°C
Pressure gauge connections	G 1/8"
Weight	gr. 550
Pressure range (bar)	0 - 2 / 0 - 4 / 0 - 8 / 0 - 12
Assembly position	Any
Wall fixing screw	M6
Max. fittings torque	40 Nm