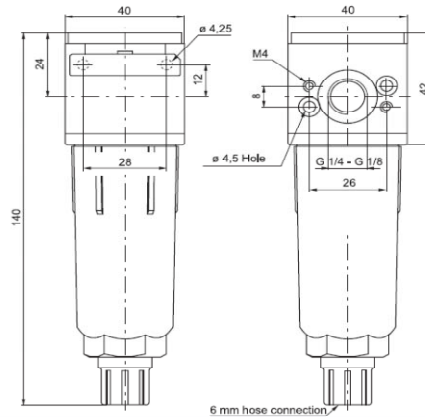




Filter



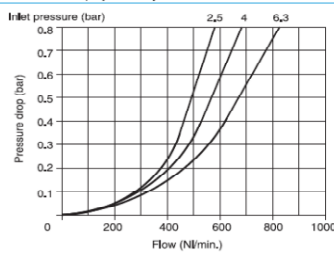
Ordering code

1701C.S.T

VERSION	
V	0 = Zinc alloy body
	1 = Technopolymer body
CONNECTIONS	
C	A = G 1/8"
	B = G 1/4"
Filter pore size	
S	A = 5µ
	B = 20µ
	C = 50µ
TYPE	
	P = Bowl protection
T	S = Automatic drain
	PS = Bowl protection and Automatic drain

Example: 17101A.B.P
Filter size 1 with G 1/8" connections, filter pore size 20µ and bowl protection with technopolymer body.

Flow rate curves



Operational characteristic

- Double filtering action: by air centrifuging and by replaceable and reusable HDPE porous filter element.
- Zinc alloy body or reinforced technopolymer body with threaded aluminium insert connections.
- Wall mounting possibility with M4 screws protected by covers.
- Transparent technopolymer bowl screwed to the body.
- Shock resistant bowl technopolymer protection.
- Manual and semi-automatic water drain valve: in the semi-automatic version the drainage happens when there is no pressure or by pushing the valve up-wards.
- Possibility to see the water level on 360° also with bowl protection assembled.
- Automatic water drainage bowl available on request.

Technical characteristic

Connections	G 1/8" - G 1/4"
Max working pressure (bar)	13 bar - 1.3 MPa
Minimum working pressure with automatic drain (bar)	0.5
Maximum working pressure with automatic drain (bar)	10
Temperature °C	50°C
Weight with technopolymer body	gr. 103
Weight with zinc alloy body	gr. 218
Filter pore size	5µ - 20µ - 50µ
Bowl capacity	20 cm³
Assembly position	Vertical
Wall fixing screw	M4
Max. fittings torque on zinc alloy body	30 Nm
Max. fittings torque on technopolymer body	15 Nm