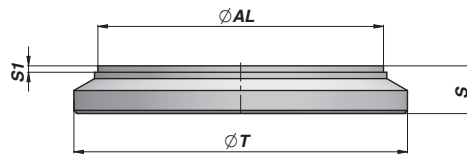
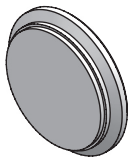


GUARNIZIONI: VEDI PAGINA 95  
SEALS: SEE PAGE 95  
DICHTUNGEN: SIEHE SEITE 95

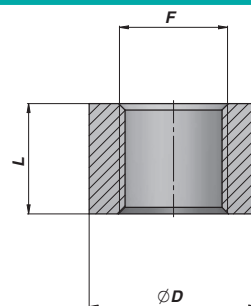
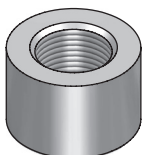
| Codice Code Bestell-Nr.   | ØAL | ØS | ØD | F       | LF | L  | L1 | kg   | Set guarnizioni Seal kits Dichtsätze |
|---------------------------|-----|----|----|---------|----|----|----|------|--------------------------------------|
| CGXX050040020             | 40  | 20 | 49 | M44x1,5 | 19 | 40 | 32 | 0,28 | GKGCXX040020                         |
| CGXX050040025             | 40  | 25 | 49 | M44x1,5 | 19 | 40 | 32 | 0,23 | GKGCXX040025                         |
| CGXX060050025             | 50  | 25 | 59 | M54x1,5 | 22 | 43 | 35 | 0,46 | GKGCXX050025                         |
| CGXX060050030             | 50  | 30 | 59 | M54x1,5 | 22 | 43 | 35 | 0,39 | GKGCXX050030                         |
| CGXX070060030             | 60  | 30 | 69 | M64x1,5 | 27 | 50 | 40 | 0,80 | GKGCXX060030                         |
| CGXX070060035             | 60  | 35 | 69 | M64x1,5 | 27 | 50 | 40 | 0,70 | GKGCXX060035                         |
| CGXX070060040             | 60  | 40 | 69 | M64x1,5 | 27 | 50 | 40 | 0,60 | GKGCXX060040                         |
| CGXX080070035             | 70  | 35 | 79 | M74x1,5 | 27 | 50 | 40 | 1,06 | GKGCXX070035                         |
| CGXX080070040             | 70  | 40 | 79 | M74x1,5 | 27 | 50 | 40 | 0,94 | GKGCXX070040                         |
| <b>NEW!</b> CGXX095080040 | 80  | 40 | 94 | M85x2   | 33 | 60 | 50 | 1,90 | GKGCXX080040                         |

MATERIALE - MATERIAL: AISI 316 ACCIAIO INOSSIDABILE - STAINLESS STEEL - ROSTFREIEM STAHL



| Codice Code Bestell-Nr. | ØAL | ØT | S  | S1 | kg   |
|-------------------------|-----|----|----|----|------|
| CFX00040050             | 40  | 50 | 10 | 2  | 0,13 |
| CFX00050060             | 50  | 60 | 10 | 2  | 0,19 |
| CFX00060070             | 60  | 70 | 12 | 2  | 0,33 |
| CFX00070080             | 70  | 80 | 12 | 2  | 0,43 |
| <b>NEW!</b> CFX00080095 | 80  | 95 | 12 | 2  | 0,60 |

MATERIALE - MATERIAL: AISI 316 ACCIAIO INOSSIDABILE - STAINLESS STEEL - ROSTFREIEM STAHL



| Codice Code Bestell-Nr. | F BSP | L  | ØD | kg   |
|-------------------------|-------|----|----|------|
| CBSX040000              | 1/4"  | 15 | 20 | 3,00 |
| CBSX060000              | 3/8"  | 17 | 26 | 4,00 |
| <b>NEW!</b> CBSX080000  | 1/2"  | 20 | 32 | 4,00 |

MATERIALE - MATERIAL: AISI 316 ACCIAIO INOSSIDABILE - STAINLESS STEEL - ROSTFREIEM STAHL